

QUICKSCANIOS

Cart System

Mobility, Efficiency, Excellence—All in One!

- **Ergonomic Excellence:**
Adjustable table and scanner holder height for user comfort and efficiency.

- **Sleek Mobility:**
Take the scanner with you to every room



- **All-in-One Design:**
Combines scanning, documentation, and organization in a single, streamlined solution.

- **Cutting-Edge Technology:**
Optimized for speed and precision to enhance your workflow.

- **Productivity Boost:**
Revolutionize your operations and stay ahead of the curve.

Your Practice Deserves To Purchase the Right Scanner!

Let Our Team of Experts Help You Make the Best Choice

QuickScan IOS:

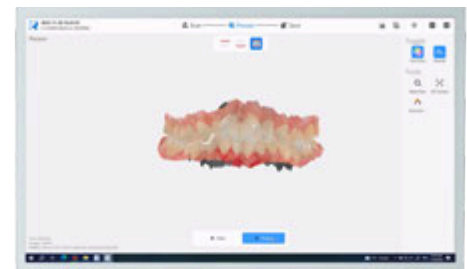
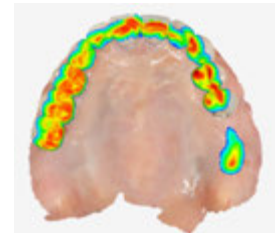
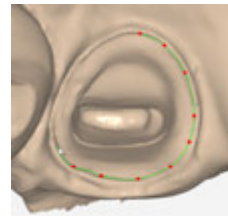
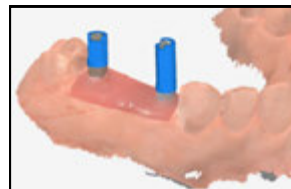
- Scanner Size: 240 X 49.5 X 30.5mm
- Scanner Weight: 210 g
- Depth of Field: 0-15mm
- Accuracy
 - Crown: <10um
 - Full Arch: <20um
- Scan Speed
 - Single Arch: 30s
 - Full Arch with Occlusion: 90s
- Tips: Autoclavable up to 100x
- Output: STL, PLY, OBJ
- Connectivity: USB 3.0 or USB C

QuickScan IOS Software:

- AI Smart Scan
- Scan Body Matching
- Metal Scan Function
- Margin Line Drawing
- Model Builder
- Undercut Inspection
- Occlusion Distance
- Cloud Platform

All-In-One PC Configuration:

- Operating System: Windows 11
- Touch Screen Size: 23.6-inch
- Processor: 12th Gen Intel Core i7-12700
- Graphics Card: RTX 3060
- Memory: 32GB DDR4
- Storage: 1 TB Solid State Drive(SSD)
- Resolution: 1920*1080
- Audio: Built-in 2.0 channel high-quality speakers



Outstanding Dental Equipment Since 1989

www.denterpriseintl.com | sales@denterpriseintl.com | 877.509.3180
156 East Granada Boulevard, Ormond Beach, FL 32176